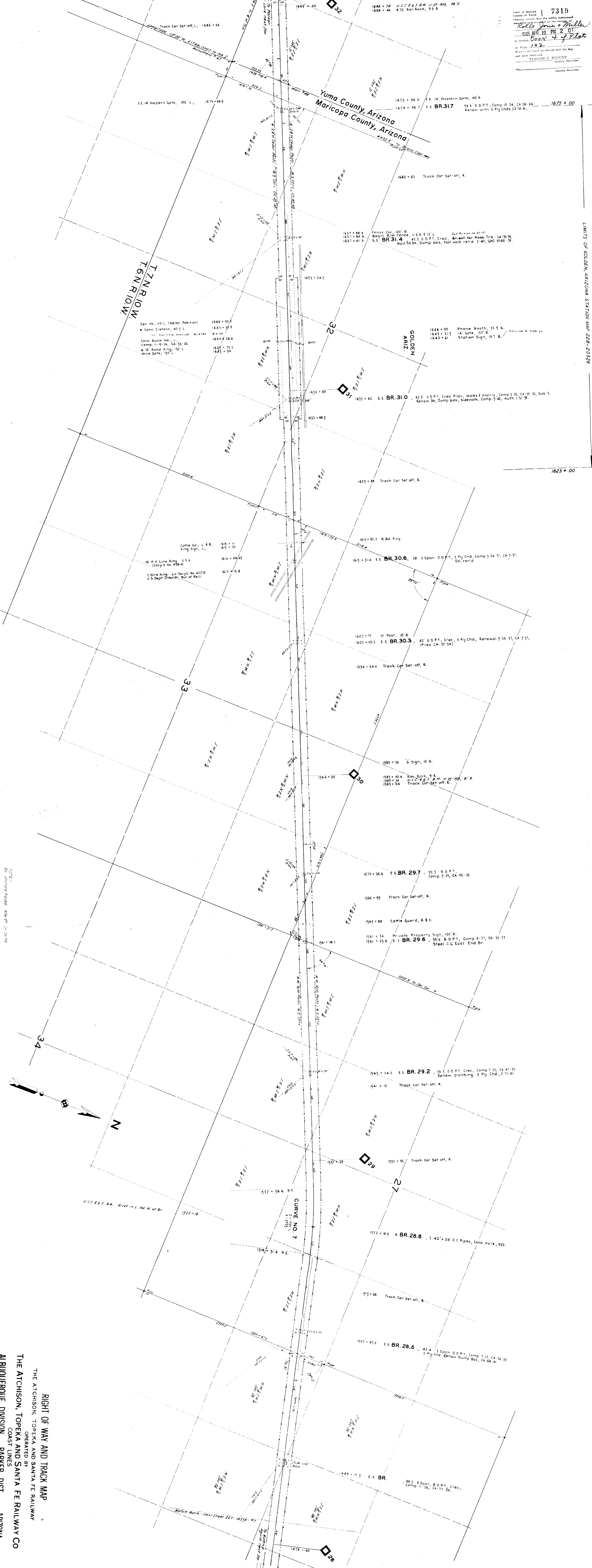


7319
 State of Arizona
 County of Yuma
 I, *Collie J. Miller*
 1945 APR 19 PM 2 01
 Book 4 of Plat
 102
 Witness my hand and official seal this day
 and year aforesaid.
 YERMIN C. WRIGHT
 County Recorder
 Deputy Recorder



LIMITS OF GOLDEN ARIZONA STATION MAP 228-20526

RIGHT OF WAY AND TRACK MAP
 THE ATCHISON, TOPEKA AND SANTA FE RAILWAY
 OPERATED BY
 THE ATCHISON, TOPEKA AND SANTA FE RAILWAY CO
 COAST LINES
 ALBUQUERQUE DIVISION, PARKER DIST., ARIZONA
 STATION 1479+40 TO STATION 1689+60
 SCALE: 1" = 400 FT.
 OFFICE OF CHIEF ENGINEER
 LOS ANGELES, CALIFORNIA
 OCT. 4, 1951
 C.E.C.L. 227-14538

EXHIBIT A-1
 V 8
 P 8

NO CHANGE IN PLAN NO. 227-14538
 GRANTEE: THE ATCHISON, TOPEKA AND SANTA FE RAILWAY CO.
 GRANTEE'S SERV. CO.
 INSTRUMENT NO. 105158
 DATE: 10/4/51
 AREA: 1.54+33.2
 LEASE AND LICENSE SCHEDULE
 R.E.M.A.R.K.S.
 PLAN SHEET NO. 227-14538